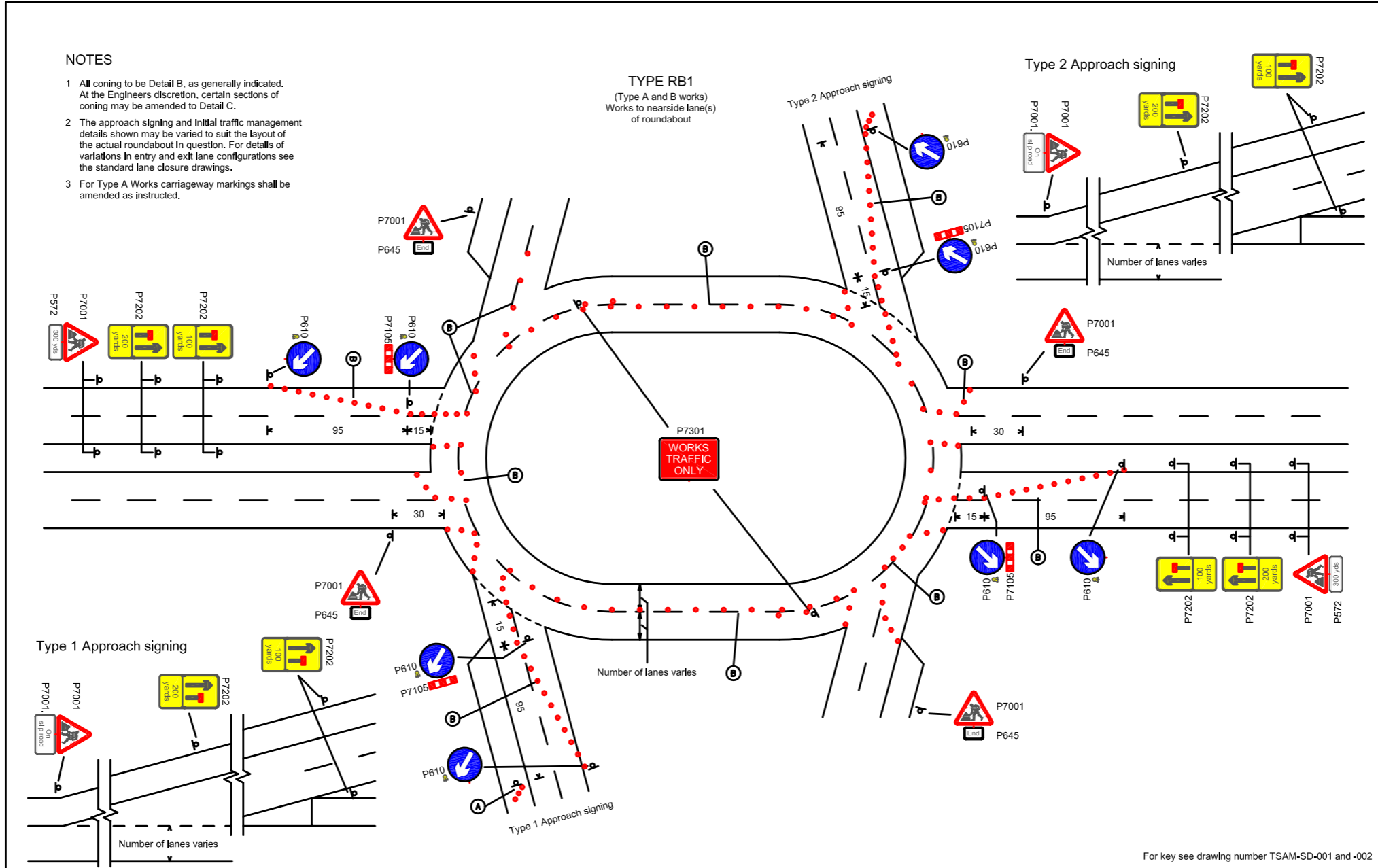


NOTES

- 1 All coning to be Detail B, as generally indicated. At the Engineers discretion, certain sections of coning may be amended to Detail C.
- 2 The approach signing and Initial traffic management details shown may be varied to suit the layout of the actual roundabout in question. For details of variations in entry and exit lane configurations see the standard lane closure drawings.
- 3 For Type A Works carriageway markings shall be amended as instructed.

TYPE RB1
(Type A and B works)
Works to nearside lane(s)
of roundabout



Traffic Management at Roundabouts
Typical Details
Sheet 1 of 4

Traffic Safety and Management - Standard Details	
Drawn A. Sturrock I.Eng. AMICE FIHIE	Original Drawing Size A3
SCALE Not to scale	Drg No. TSAM-SD-603
DIMENSIONS Metres	