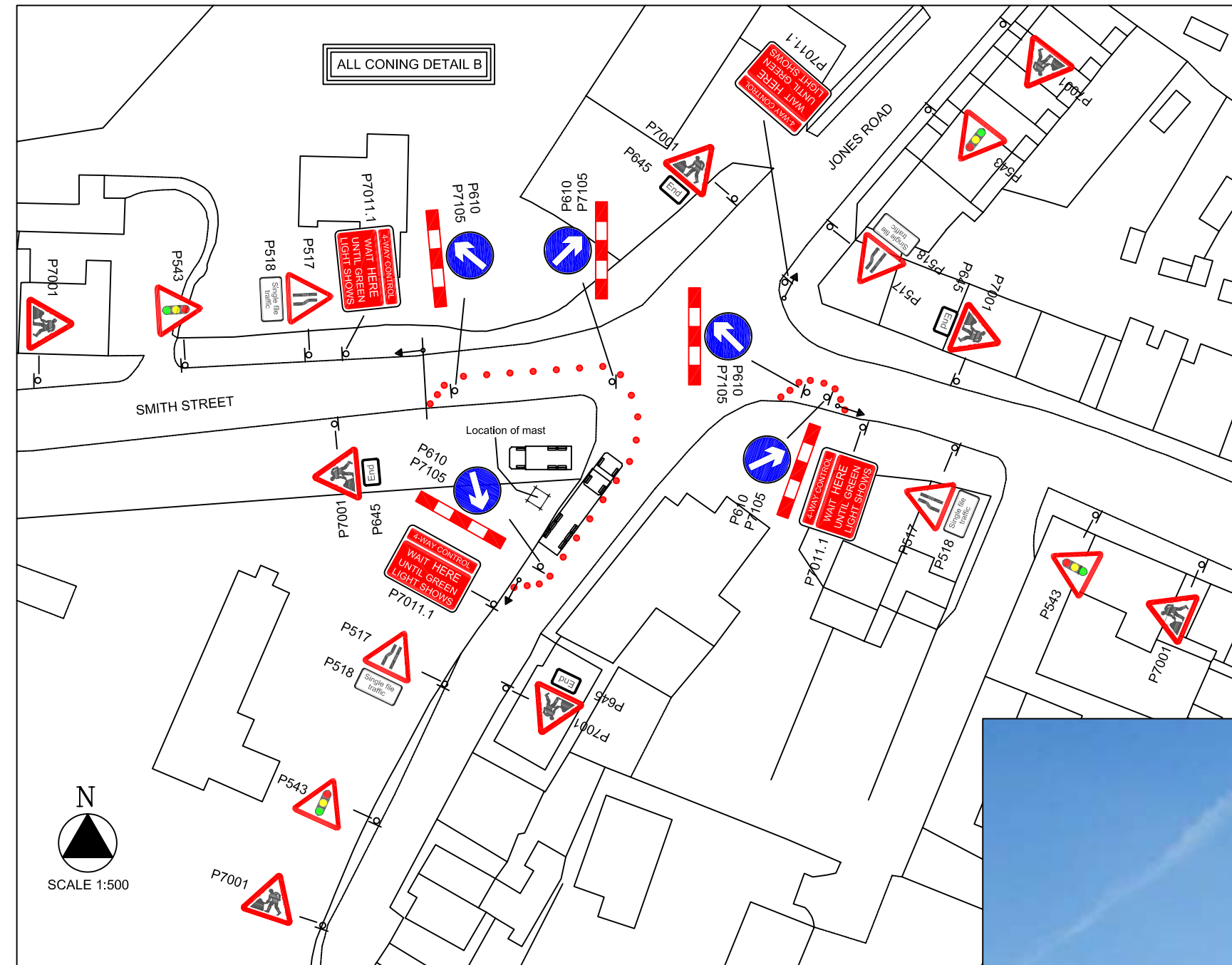
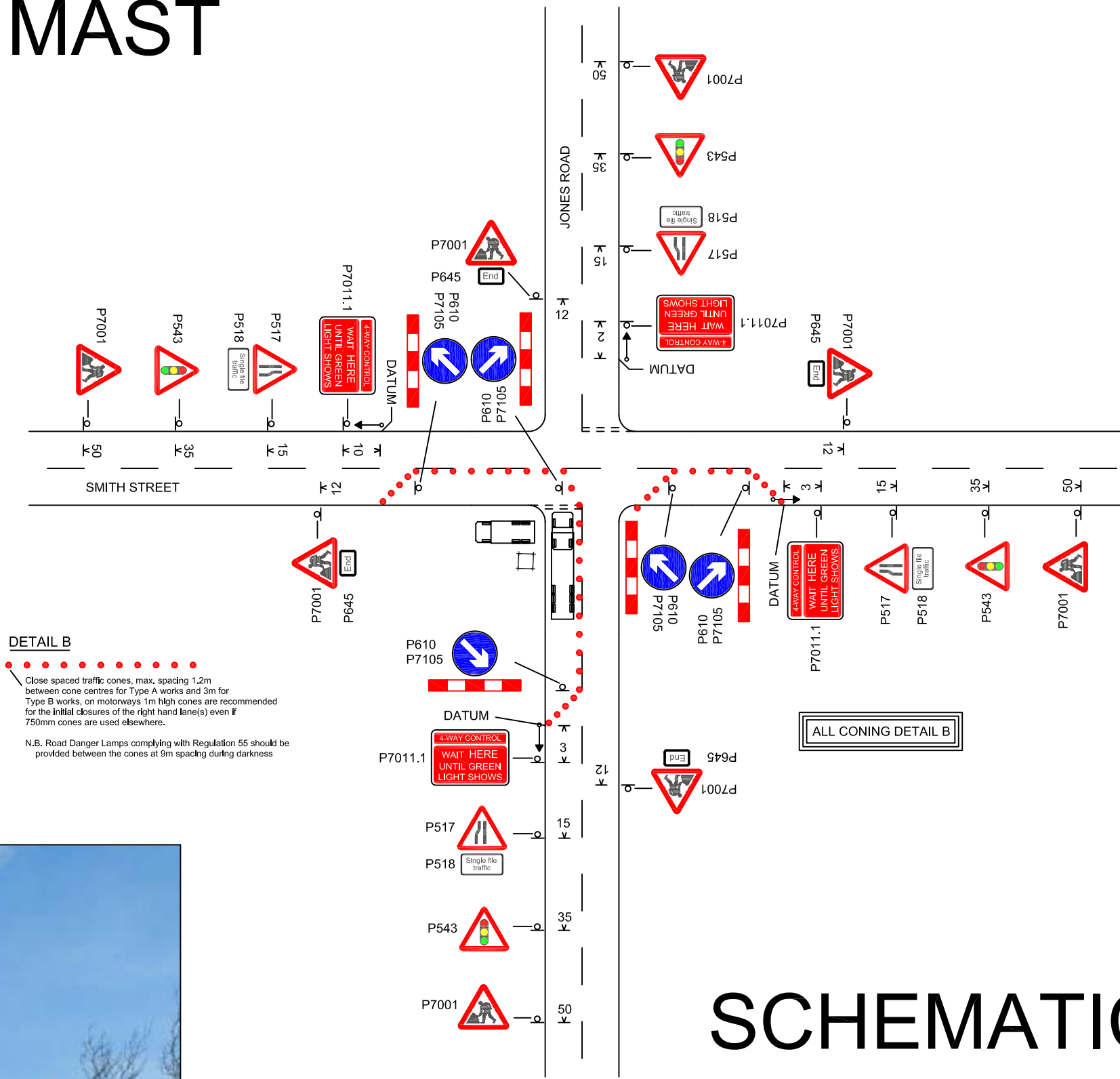


4 WAY PORTABLE TRAFFIC SIGNALS - 30mph SPEED LIMIT INSTALLATION OF MOBILE PHONE MAST



TO SCALE (1:500)



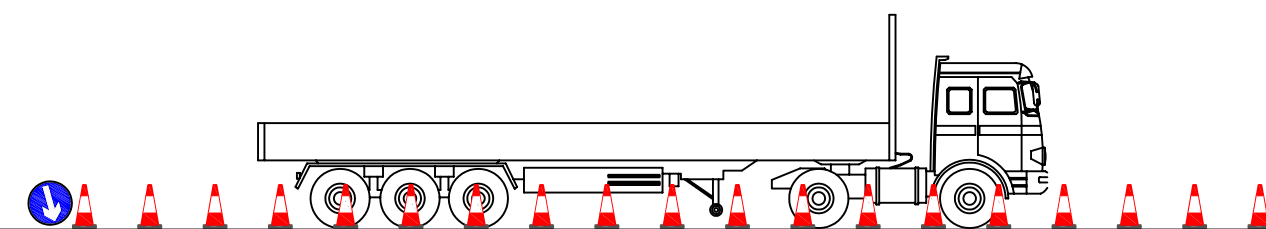
SCHEMATIC (NTS)

Qty: 2 Ref: 517 Road narrows on one side only ahead	
Qty: 2 Ref: 517 Road narrows on one side only ahead (variant)	
Qty: 4 Ref: 518 Single file traffic	Single file traffic
Qty: 4 Ref: 543 Traffic signals ahead	
Qty: 2 Ref: 610 Keep left	
Qty: 3 Ref: 610 Keep right	
Qty: 4 Ref: 645 End plate	End
Qty: 8 Ref: 7001 Road works ahead	
Qty: 4 Ref: 7011 4 Way Control - Wait here until green light shows	
Qty: 5 Ref: 7105 Lane closure barrier	

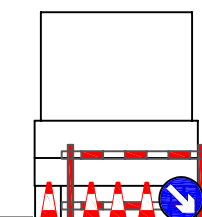
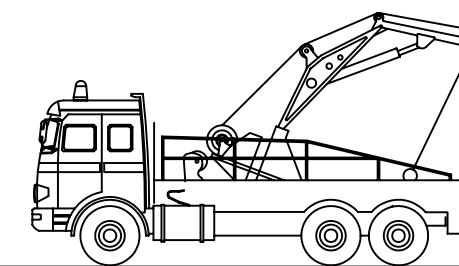
BILL OF QUANTITIES

- Crane
- Delivery vehicle

DETAIL B
Close spaced traffic cones, max. spacing 1.2m between cone centres for Type A works and 3m for Type B works, on motorways 1m high cones are recommended for the initial closures of the right hand lane(s) even if 750mm cones are used elsewhere.
N.B. Road Danger Lamps complying with Regulation 55 should be provided between the cones at 9m spacing during darkness



TO SCALE (1:100)



TO SCALE (1:100)

CADAPTOR SOLUTIONS
01274 780703
WWW.CONESoftware.COM

DEMO DRAWING
CONE 7 UK VERSION

Issue	Amendment	Date

INSTALLATION OF MOBILE
PHONE MAST SHOWING
TRAFFIC MANAGEMENT AND
4 WAY PORTABLE TRAFFIC LIGHTS

DRG No
ABC 123456789
SCALE Not to scale
DIMENSIONS Metres