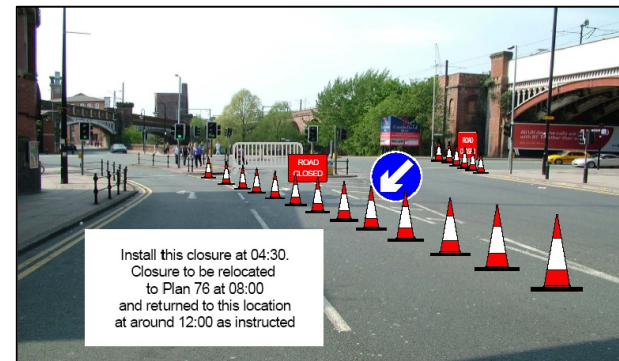
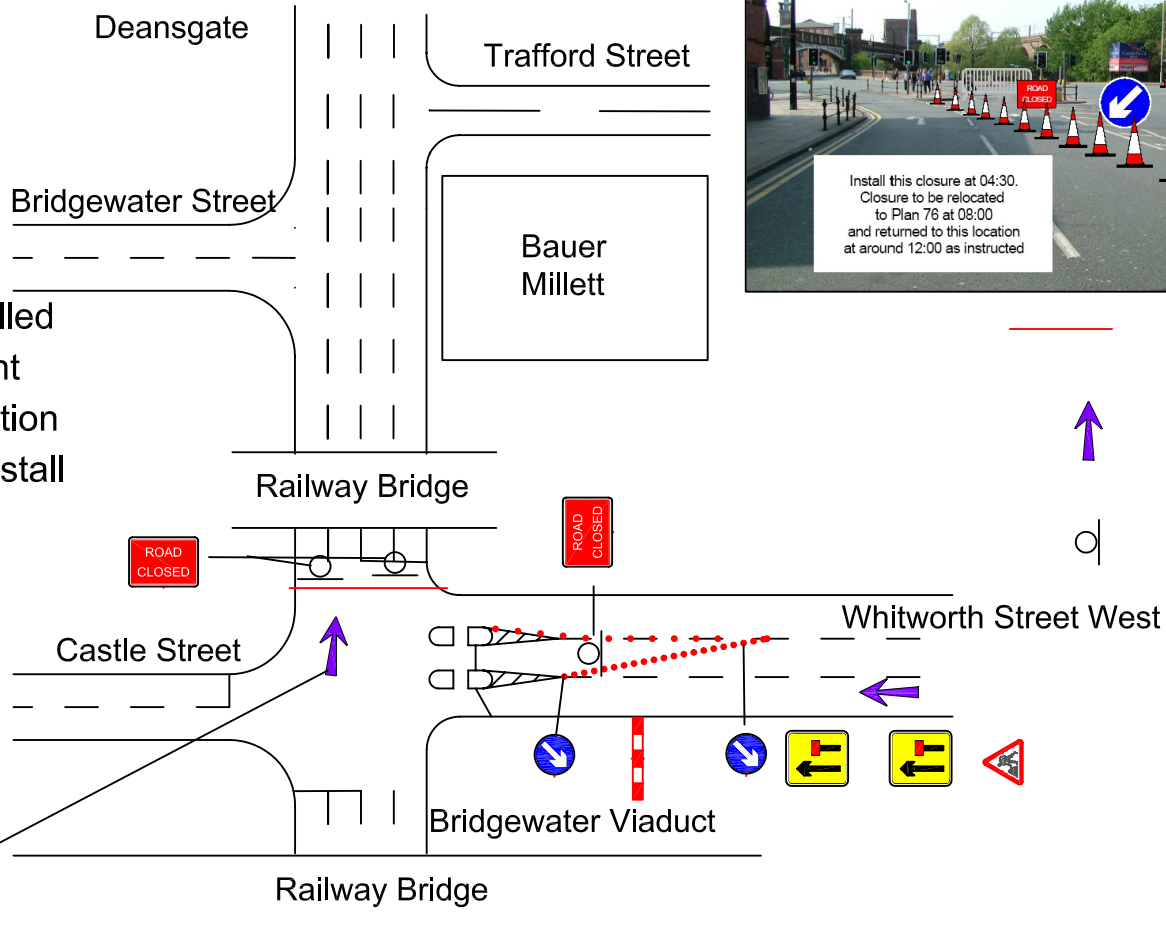





The lane closure will be installed by Hatton Traffic Management and stay in place for the duration of the closures. Steward to install the barriers and road closed signs at 04:30 and switch to plan 76 at 08:00 then return to this scheme at around 12:00 once instructed


See Plan 76b



Install this closure at 04:30.
Closure to be relocated to Plan 76 at 08:00 and returned to this location at around 12:00 as instructed

-  Barrier Line
-  Photographic View
-  Sign

When you are asked to reopen the road please replace all equipment back in its delivery location

 Unit 10b, Brunswick Industrial Estate,	Great Manchester Run		<h1>Deansgate/</h1>	DATE	2nd May 2004
	Drawn By : Andrew Ross			SCALE	NOT TO SCALE
	Checked By : Steve Miles			DRAWING No.	Junction 076aM
	Steward Point 76a				